

## Lambplan Cleanskin Web Search

A new web search developed by Lamplan is now available.

Found at [www.sheepgenetics.org.au/Breeding-services/LAMBPLAN-Home](http://www.sheepgenetics.org.au/Breeding-services/LAMBPLAN-Home) it includes animals from all the shedding breeds being, Dorpers, White Dorpers, Wiltshire Horn, Wilti Poll and Cleanskins. In time it will foster an open approach to breed types and is a great list to view, to give an oversight into the relative strengths of each breed. ASBV's are from the terminal runs and the balanced SRC (Self Replacing Carcass) Index is used to list animals.

## Sale Animals

Surplus ewes are sold early December each year and rams are available at our annual sale in late October or by private selection.



Give us a call as visitors are always  
welcome at Cashmore Park.

[www.coopworth.org.au/cashmorepark/](http://www.coopworth.org.au/cashmorepark/)

**John Keiller**

Cashmore Park  
114 Wilmots Rd Cashmore VIC 3305  
AUSTRALIA

[cashmorepark@bordnet.com.au](mailto:cashmorepark@bordnet.com.au)

Mobile: 0409 804 638  
Office: (03) 5526 5248  
Fax: (03) 5526 5390  
AH: (03) 5526 5274



# Cashmore Nudies

Easy Care sheep for Southern Farming Systems.

No Shearing, No Crutching, No flies,  
Minimum drenching

LAMBPLAN Flock CLEAN SKIN CS0001



## Responding to Customers Needs.

Cashmore Park understands that farming systems are continually changing and that our role is to position animals at the forefront of change and supply products that meet our customer's management and financial needs.

Over the past few years we have had numerous conversations with clients about our successful self-replacing maternal sheep with the repeated discussion point arising "Why do we need wool on sheep?"

Acting upon this, a detailed look at the economics of wool on XB sheep and a lack of easy care, non shearing sheep suitable for southern Australian farming systems we started Cashmore Nudies.

These sheep are developing into very similar animals to our Maternal Composites with the benefit of no wool.

## Breeding Aims

Remove wool until no shearing and crutching is required.

Produce sheep with sound feet, body structure and constitution capable of withstanding southern farming systems.

Increase the capacity of sheep to be resistant and resilient of internal parasites.

Increase growth rates.

Increase lambing %

Increase carcass value of wether lambs.

Improve ewe temperament at lambing.

Maintain easy care lambing characteristics.

Produce wool shedding sheep rather than hair types.

Make sound profits in the paddock and satisfy consumer needs with excellent eating experiences.

## Management Practices.

Performance record all stock on Lambplan and use Maternal Indexes.

Run all stock at commercial rates.

Pregnancy scan for multiples and cull dries.

Wet / Dry at marking and cull dries.

Cull all ewes / lambs that need any form of assistance throughout the year.

Run all stock across melwire in shed annually to check feet structure.

Run all stud stock in large contemporary groups to collect powerful and accurate performance data.

Run rams in rotations to apply pressure and remove the bottom end.





## Background

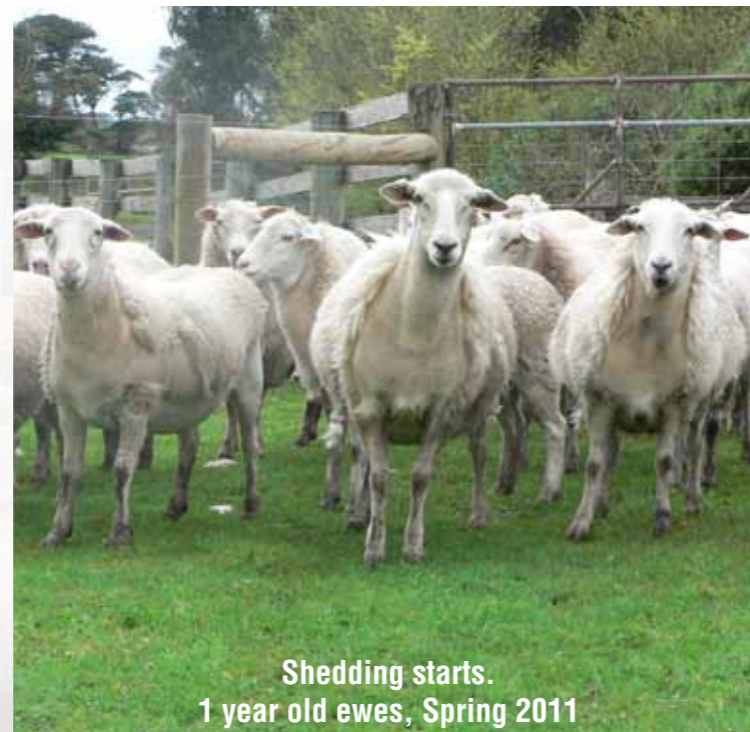
In 2003 Cashmore Park purchased 500 Wiltshire Horn X BLM ewes and Dorper X Coolalee ewes. These were initially mated to Wiltshire Horn rams and recently to Wilti Poll rams as they became available. Foundation ewes were run hard with culling for poor constitution and signs of worms removed, bad feet structure and dags culled. In fly waves struck ewes were culled. In 2006 the best 200 ewes were selected from the 1000 strong commercial flock and performance recording started. In 2008 these ewes commenced running with the Maternal and Terminal seedstock in a single performance recorded management group. The seedstock flock has expanded to 400 ewes plus all ewe lambs joined annually and produced 600 Lambplan performance recorded lambs in 2011. Our Nudie flock has continued to grow with 2300 Nudie stud and commercial ewes and ewe lambs mated annually.

## New Genes and Genetic Diversity

Artificial insemination with top performing Lambplan White Dorper genetics, Kojaks from WA and Wilti Polls has added some new diversity to the Nudies. With our population genetics mentality we will continue to look for new DNA that may complement our breeding goals. Starting in 2007 we took on the long term and large task of producing F1 Nudies from our maternal and terminal flocks which in effect is harvesting good genes to add to the Nudie program. The maternal seedstock ewes represented 160 sires used by Cashmore Park in the last 8 years, with great genetic diversity. These half bred ewes are then backcrossed to Nudie rams. This program allows us to access all the attributes of our maternal composites. We see the Wiltshire and Dorper supplying non-shearing genes, Terminals, growth and carcass traits and Maternals, fertility, milk, mothering and parasite resistance. We now have sufficient scale to use the computer mating program Total Genetic Resource Management to maintain our diversity and increase genetic gain. This is producing a strong, sound easy care composite sheep with genetic diversity across economic traits.

## Fleece Shedding

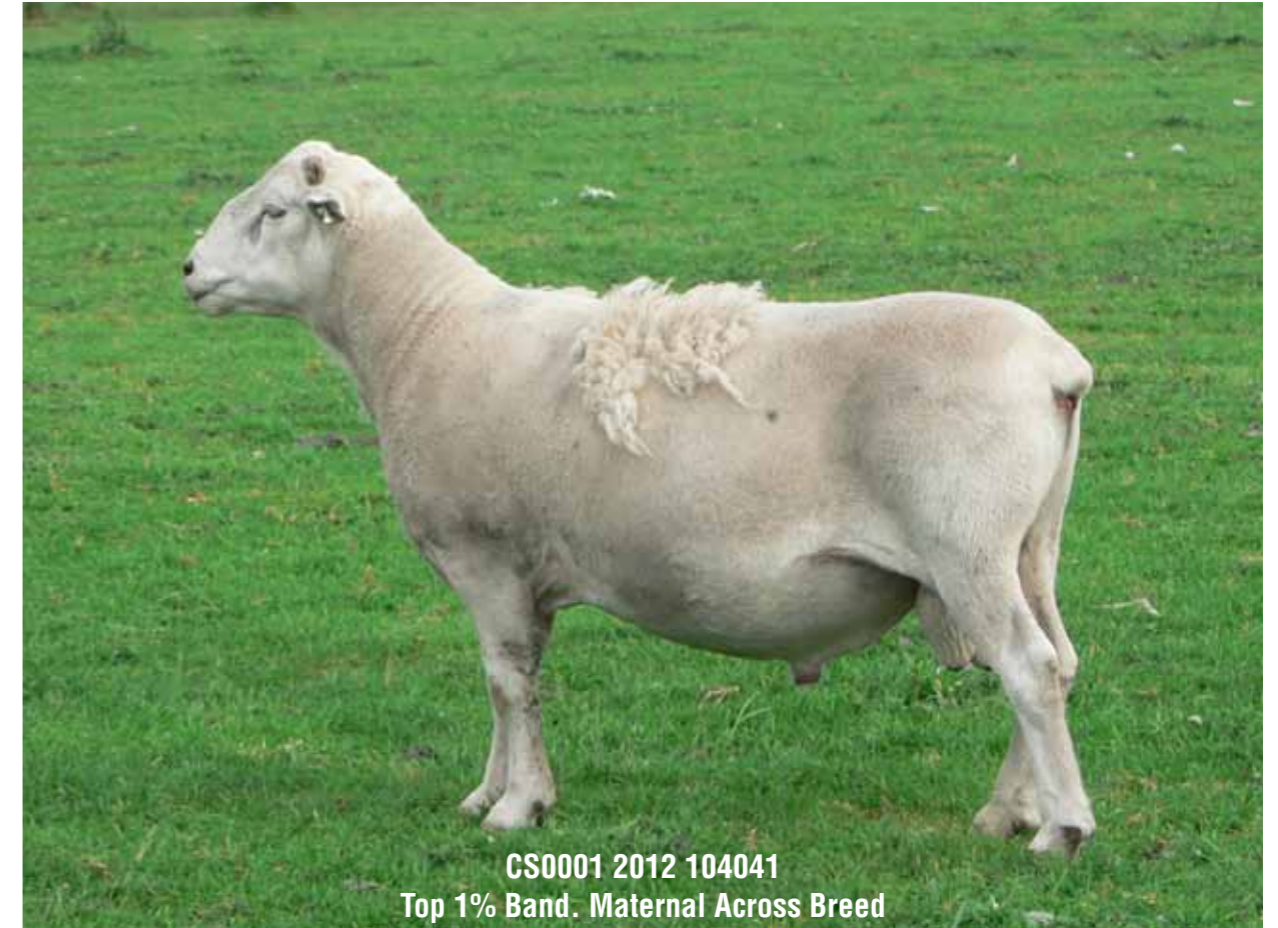
This takes place annually from September to December and starts under the neck and belly, then sides and lastly the back. Sheep are bare over summer then quickly regrow short fleeces from late March onwards depending on the onset of cool weather. Variation is found between time of wool shedding with some early and some quite late. Also individual animals vary from year to year and those in better body condition shed easiest. We are selecting for earlier shedding types with shorter fleece length as we believe these are the easiest care. Basically the wool needs to be shed before fly problems arise via body or breech strike. Incomplete shedders or turtle backs generally carry only 1 to 2 kg of wool. This gives them some protection during winter and summer from the elements. At this stage we require all the profitable genes from our other breed types as they are graded into the Nudies. Our flock consists of many clean shedders but also F1, F2 etc and will remain this way as we grow performance and diversity.



Shedding starts.  
1 year old ewes, Spring 2011

## Performance of CS0001 2010 104041

Our Nudie sheep continue to improve and in 2010 a ram in the top five animals for weight from a mob of 700 rams including all our Maternal and Terminals was a Nudie. This ram 104041 now ranks in the top 1% in the across breed Lambplan Maternal ASBVs.



CS0001 2012 104041  
Top 1% Band. Maternal Across Breed

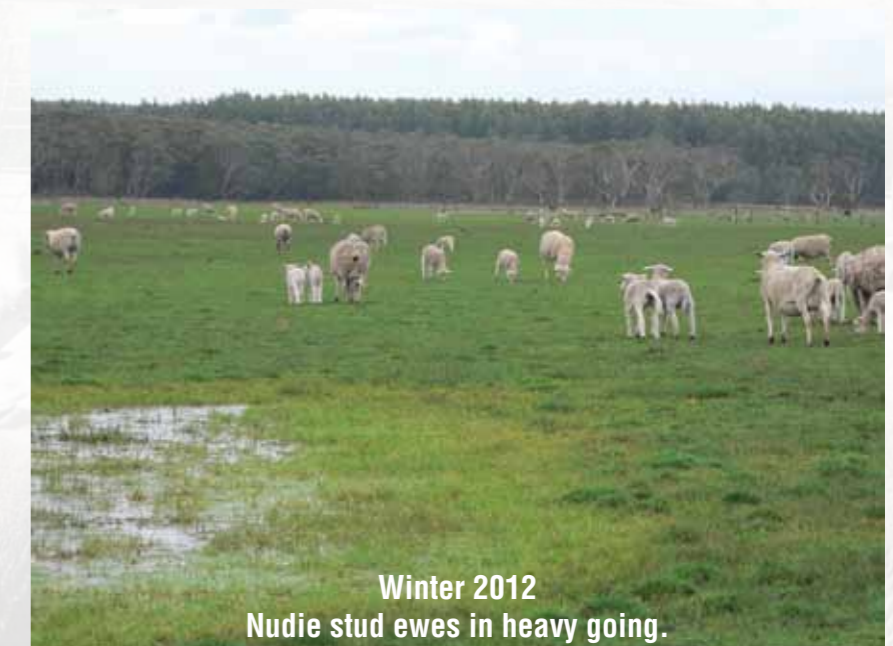
## Lambing %

Our rolling long term average is 140% from mixed age ewes run under hard commercial conditions.

### 2011 Seedstock Weaning %

Ewe Birth Year	Lamb %
2004	164%
2005	136%
2006	176%
2007	135%
2008	146%
2009	125%
2010	68%

31% were 2 year olds  
Adults averaged 139%



Winter 2012  
Nudie stud ewes in heavy going.